

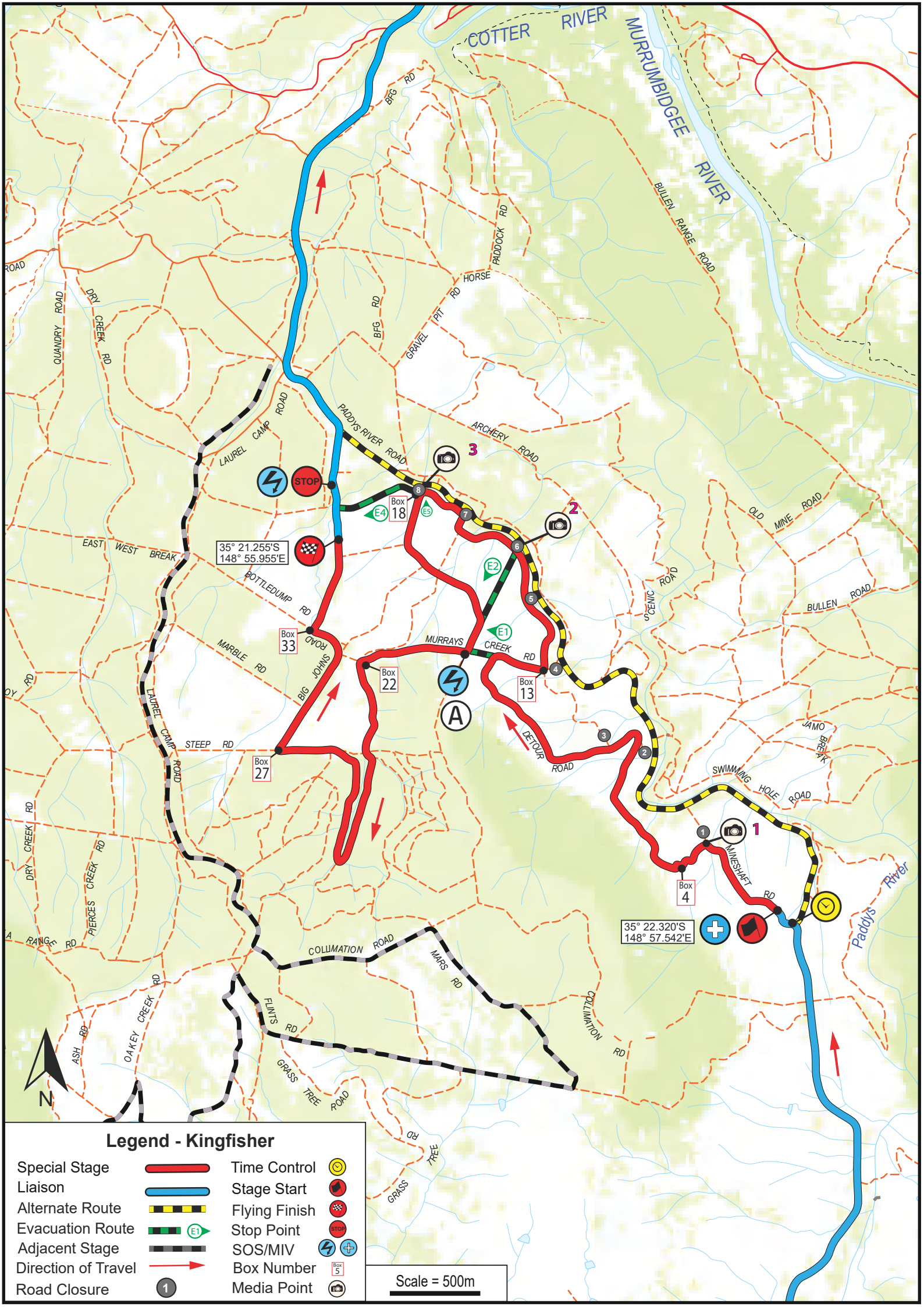
35° 20.813'S
148° 55.704'E

35° 24.909'S
148° 55.897'E

Legend - Tidbinbilla

- | | | | |
|---------------------|--|---------------|--|
| Special Stage | | Time Control | |
| Liaison | | Stage Start | |
| Alternate Route | | Flying Finish | |
| Evacuation Route | | Stop Point | |
| Adjacent Stage | | SOS/MIV | |
| Direction of Travel | | Box Number | |
| | | Media Point | |

Scale = 500m



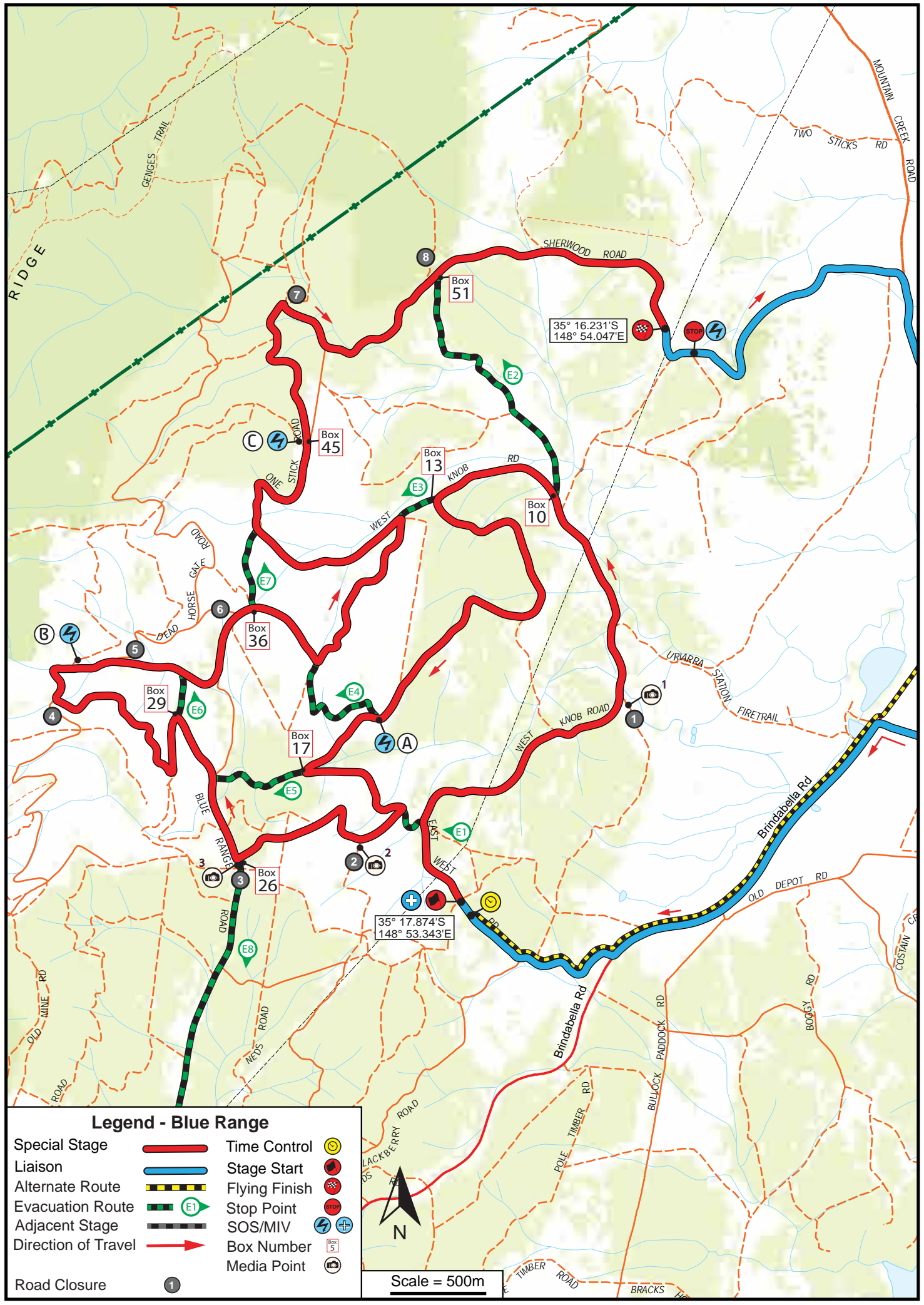
Legend - Kingfisher

- | | | | |
|---------------------|--|---------------|--|
| Special Stage | | Time Control | |
| Liaison | | Stage Start | |
| Alternate Route | | Flying Finish | |
| Evacuation Route | | Stop Point | |
| Adjacent Stage | | SOS/MIV | |
| Direction of Travel | | Box Number | |
| Road Closure | | Media Point | |

Scale = 500m

35° 21.255'S
148° 55.955'E

35° 22.320'S
148° 57.542'E

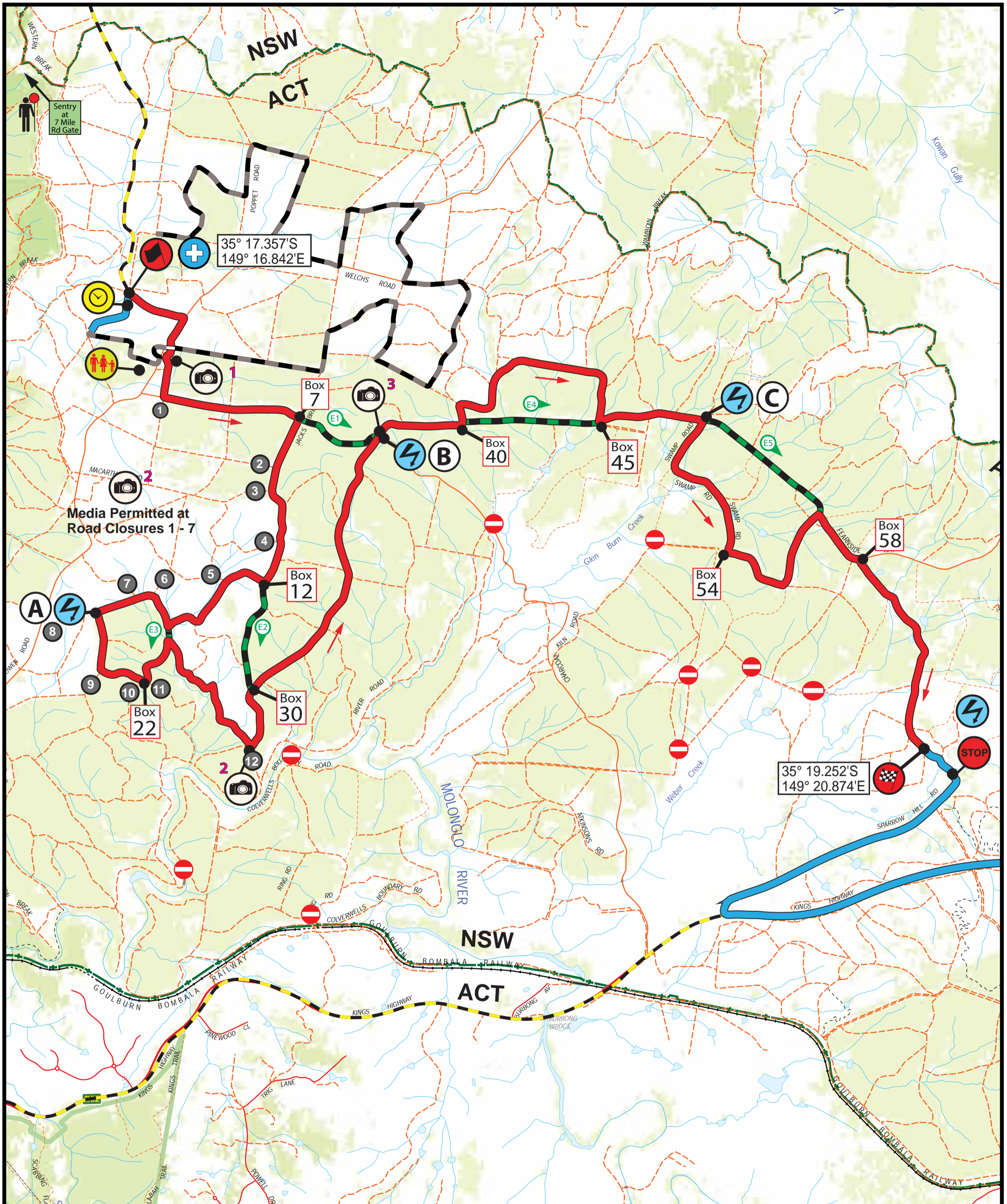


Legend - Blue Range

- | | | | |
|---------------------|--|---------------|--|
| Special Stage | | Time Control | |
| Liaison | | Stage Start | |
| Alternate Route | | Flying Finish | |
| Evacuation Route | | Stop Point | |
| Adjacent Stage | | SOS/MIV | |
| Direction of Travel | | Box Number | |
| Road Closure | | Media Point | |



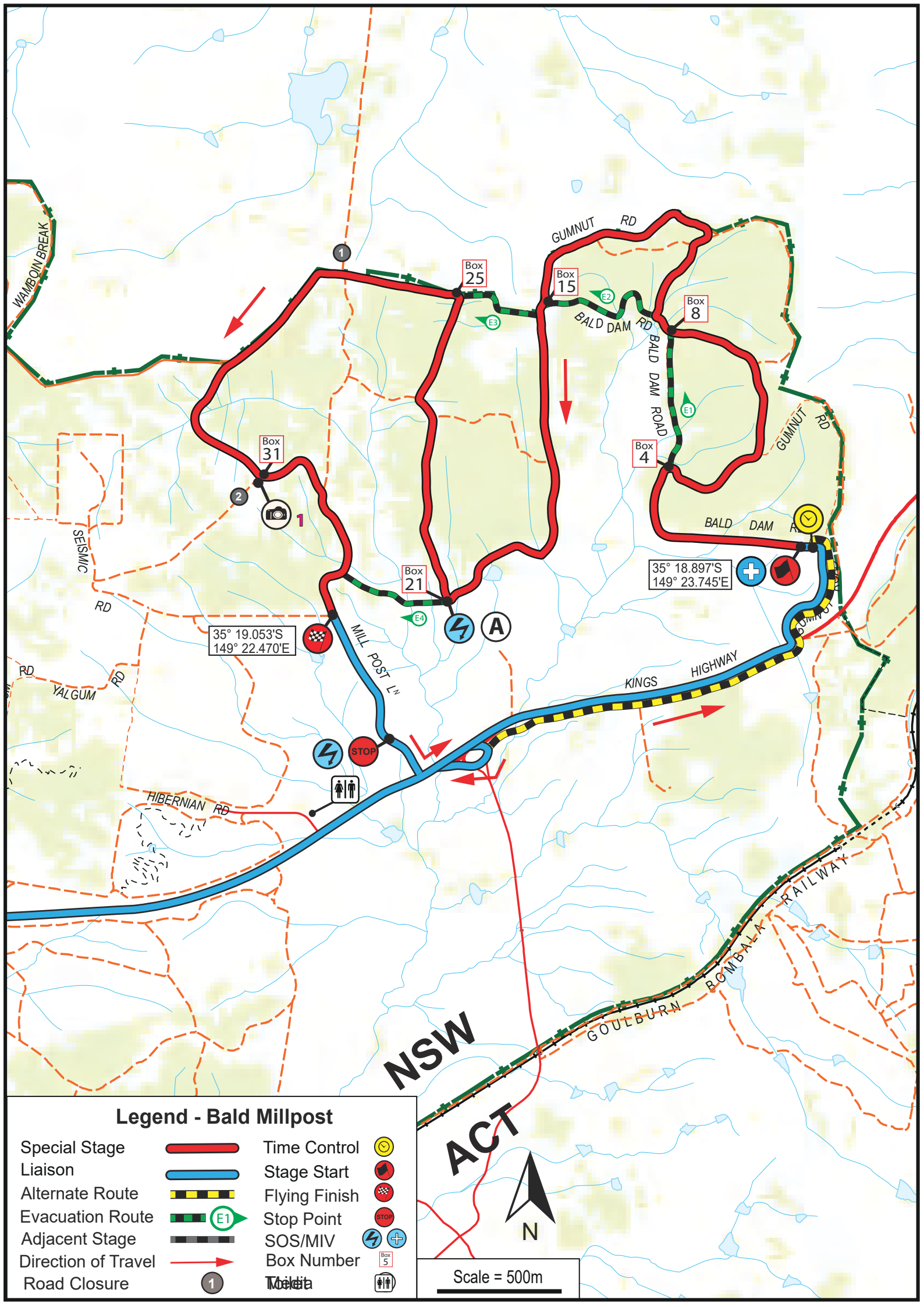
Scale = 500m



Legend - Charcoal Kiln

- | | | | |
|---------------------|--|---------------|--|
| Special Stage | | Time Control | |
| Liaison | | Stage Start | |
| Alternate Route | | Flying Finish | |
| Evacuation Route | | Stop Point | |
| Adjacent Stage | | SOS/MIV | |
| Direction of Travel | | Box Number | |
| Road Closure | | Spectators | |
| Locked Gate | | Media | |

Scale = 500m



Legend - Bald Millpost

Special Stage		Time Control	
Liaison		Stage Start	
Alternate Route		Flying Finish	
Evacuation Route		Stop Point	
Adjacent Stage		SOS/MIV	
Direction of Travel		Box Number	
Road Closure		Public	

Scale = 500m